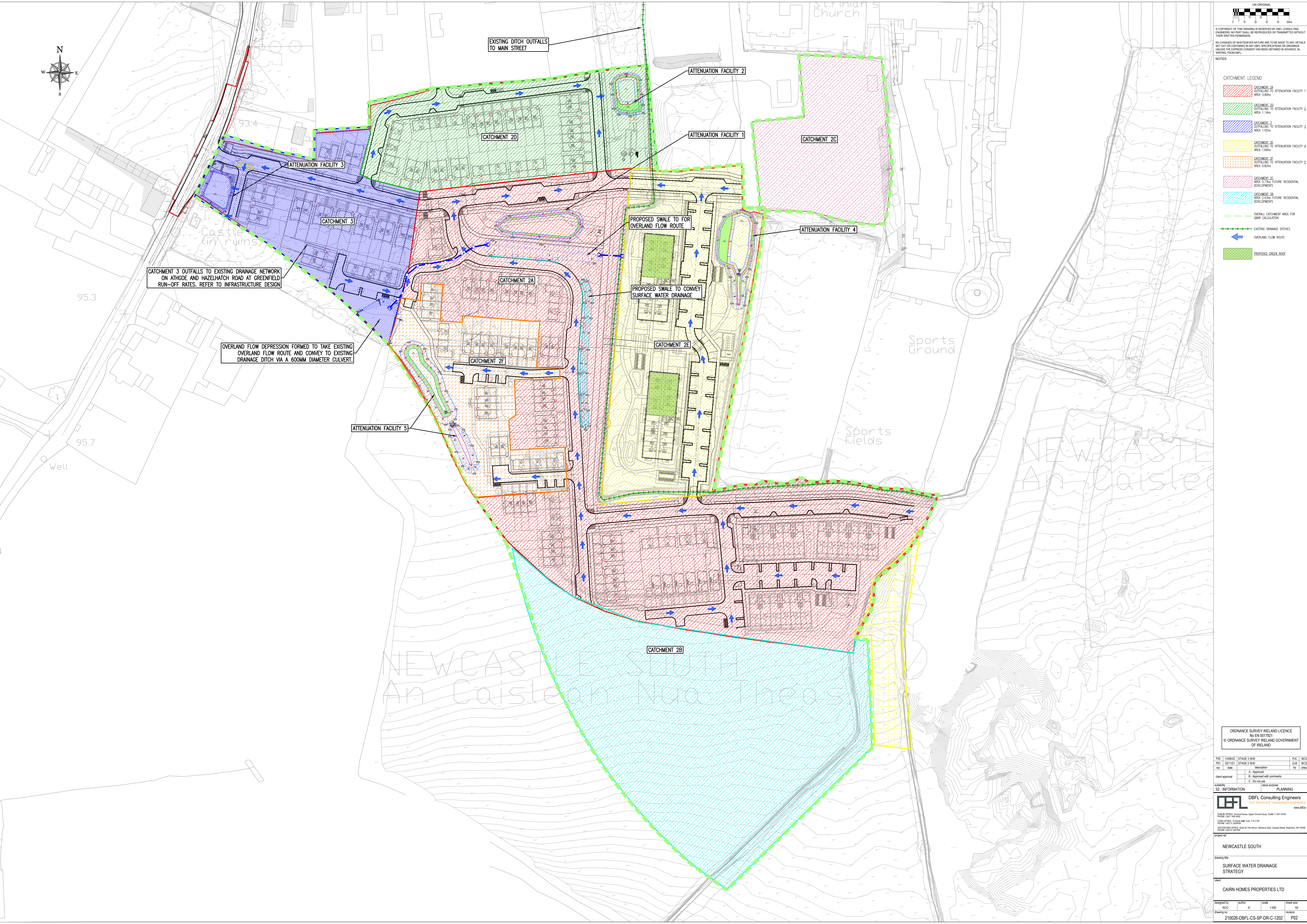
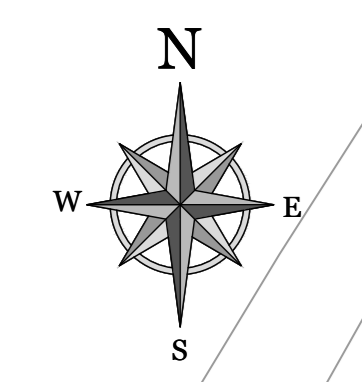


- CATCHMENT LEGEND**
- CATCHMENT 2A
OUTFALLING TO ATTENUATION FACILITY 1
AREA 3.80ha
 - CATCHMENT 2B
OUTFALLING TO ATTENUATION FACILITY 2
AREA 1.14ha
 - CATCHMENT 3
OUTFALLING TO ATTENUATION FACILITY 3
AREA 1.02ha
 - CATCHMENT 2C
OUTFALLING TO ATTENUATION FACILITY 4
AREA 1.69ha
 - CATCHMENT 2E
OUTFALLING TO ATTENUATION FACILITY 5
AREA 0.82ha
 - CATCHMENT 2C
AREA 0.70ha FUTURE RESIDENTIAL DEVELOPMENTS
 - CATCHMENT 2B
AREA 2.03ha FUTURE RESIDENTIAL DEVELOPMENTS
 - OVERALL CATCHMENT AREA FOR OVERLAND FLOW ROUTE
 - EXISTING DRAINAGE DITCHES
 - OVERLAND FLOW ROUTE
 - PROPOSED GREEN ROOF



CATCHMENT 3 OUTFALLS TO EXISTING DRAINAGE NETWORK ON ATHGEO AND HAZELHATCH ROAD AT GREENFIELD RUN-OFF RATES. REFER TO INFRASTRUCTURE DESIGN

OVERLAND FLOW DEPRESSION FORMED TO TAKE EXISTING OVERLAND FLOW ROUTE AND CONVEY TO EXISTING DRAINAGE DITCH VIA A 600MM DIAMETER CULVERT.

PROPOSED SWALE TO CONVEY SURFACE WATER DRAINAGE

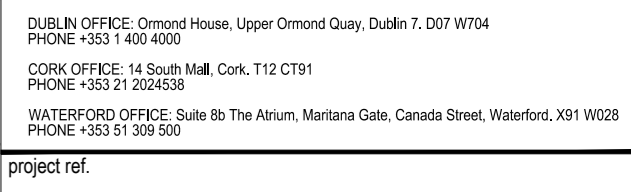
PROPOSED SWALE TO FOR OVERLAND FLOW ROUTE

ORDNANCE SURVEY IRELAND LICENCE
 No EN 0017921
 © ORDNANCE SURVEY IRELAND GOVERNMENT OF IRELAND

PROJ	13/06/20	STAGE 3 SHD	PIC	NOG
REV	02/11/21	STAGE 2 SHD	GIS	NOG
DATE			BY	2904

client approval
 A - Approved
 B - Approved with comments
 C - Do not use

ISSUE INFORMATION
 issue purpose
 PLANNING



NEWCASTLE SOUTH

SURFACE WATER DRAINAGE STRATEGY

CAIRN HOMES PROPERTIES LTD

designed by	author	scale	sheet size
NOG	IC	1:500	A0
drawing no	210026-DBFL-CS-SP-DR-C-1202		P02